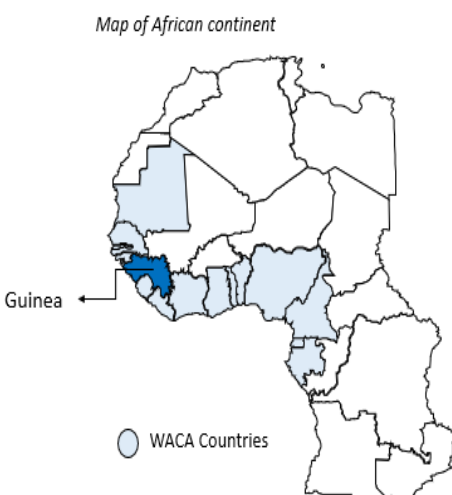


Guinea



Indicator	Data
Population, 2019 (no.)	12,771,246
Population density, 2018 (people per sq. km of land area)	50.52
Coastal population, 2014 (no.)	1,996,496
Share of people living in urban areas, 2019 (%)	36.5
Total MSW generated, 2014 (tons/year)	481,966

Socioeconomic Profile

Guinea is a low-income country in West Africa bordered by Guinea-Bissau, Senegal, Mali, Côte d'Ivoire, Liberia, and Sierra Leone. Guinea's mining sector drives the economy of the nation, particularly gold, bauxite, and diamond mining.¹ The country comprises seven administrative regions and one *gouvernorat*² and runs a presidential republic system with a parliament.

In 2019, Guinea recorded an overall GDP (PPP) of \$32.7 billion and a GDP (PPP) per capita of \$2,562.^{3, 4} With an area of 245,857 km², it has a population of 12,771,246 (2019) and a population density of 50.52 people per km² (2018).⁵ Though urbanization has been increasing, majority of Guinea's population still resides in rural areas—approximately 63.5 percent in 2019.⁶ In 2014, 2 million Guineans resided in coastal areas,⁷ including in the capital city, Conakry.

Plastic Industry and Ecosystem

In 2018 and 2019, Guinea had no domestic resin production. Its conversion industry processed 15 kt of resin (14 kt PE, 1 kt PET) in 2018 and 17 kt of resin (16 kt PE, 1 kt PET) in 2019. Similar to other West African countries, Guinea is a net importer of plastics. In 2019, 51.9 million kg of plastics were imported

¹ CIA, *The World Factbook: Guinea* (Langley, VA: CIA, 2021), <https://www.cia.gov/the-world-factbook/countries/guinea/>.

² Ibid.

³ GDP, PPP (constant 2017 international dollars) and GDP per capita, PPP (constant 2017 international dollars).

⁴ World Bank Group, "World Development Indicators," 2020.

⁵ Ibid.

⁶ Ibid.

⁷ Jambeck et al., "Plastic Waste Inputs from Land into the Ocean."

into the country, with PE and PP accounting for about 90.2 percent of the imports.⁸ Only 25,948 kg of PVC plastics were exported from Guinea that same year.⁹

Solid Waste Management

Guinea generates 0.6 kg of MSW per capita per day and this amounts to an overall daily MSW generation of 1.2 million kg.¹⁰ However, the West African nation has struggled to effectively manage its waste arisings—about 83.5 percent of MSW generated in Guinea is inadequately managed.¹¹

Plastic waste management has increasingly been cited by Guinea’s government as a pressing environmental issue for the nation. Plastic waste accounts for 5 percent of MSW arisings, with a daily generation rate of about 59,000 kg, of which 83.5 percent is inadequately managed¹²; 1,186 kg/day of plastic waste leaks into the environment in Guinea.¹³

Legislation, Policies, and Other Initiatives

In Guinea, the Ministry of Environment, Water and Forests is responsible for overseeing waste management.¹⁴ Currently, waste management in Guinea is driven by the following:

- Environmental Code, 2019: This law establishes guidance on appropriate waste reduction, management, and disposal.¹⁵

⁸ UN Comtrade, “UN Comtrade Database,” 2019.

⁹ Ibid.

¹⁰ Jambeck et al., “Plastic Waste Inputs from Land into the Ocean.”

¹¹ Ibid.

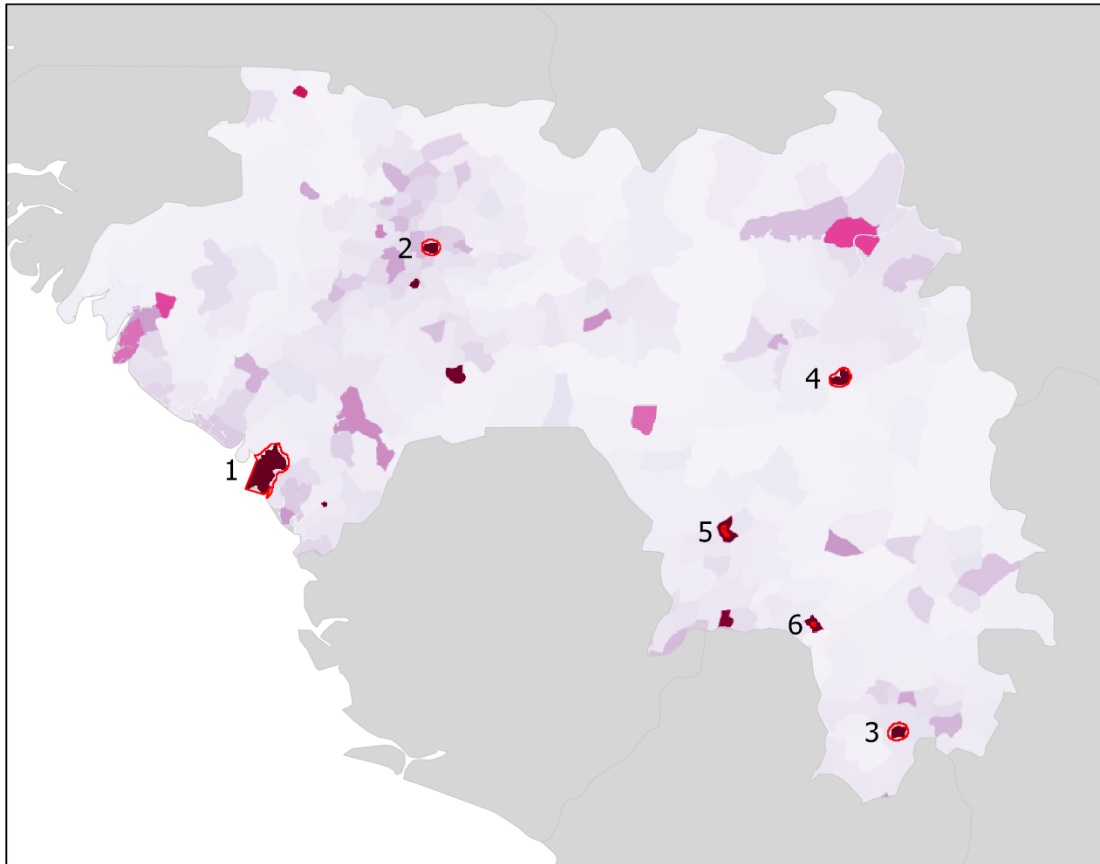
¹² Ibid.

¹³ Ibid.

¹⁴ World Bank, *Republic of Guinea: Planning, Connecting, Financing in Conakry* (Washington, DC: World Bank, 2019), <https://openknowledge.worldbank.org/bitstream/handle/10986/31757/Guinea-Urban-Sector-Review-Planning-Connecting-Financing-in-Conakry.pdf;jsessionid=6987DA2905ACB4AD6B6E7B37CA971373?sequence=1>.

¹⁵ Chatham House, “Policies.”

Plastic Waste in Guinea



Plastic Generation Hotspots

ID	Locale	Rank	Plastic Waste (kt)	Population	Area (km ²)
1	Conakry	28	11.2738	2,974,114	922.14
2	Labe	58	0.7898	208,361	159.92
3	Nzerekore	55	1.0611	279,926	190.78
4	Kankan	54	1.0778	284,318	203.08
5	Kissidougou	70	0.0466	12,294	19.54
6	Macenta	71	0.019	5,025	7.08

Total Annual National
Plastic Waste Generation:
225.08 kt

Location in Region

