

## Togo

Map of African continent



Indicator	Data
Population, 2019 (no.)	8,082,366
Population density, 2018 (people per sq. km of land area)	145.05
Coastal population, 2014 (no.)	1,991,642
Share of people living in urban areas, 2019 (%)	42.2
Total MSW generated, 2014 (tons/year)	416,688

### Socioeconomic Profile

Togo is a low-income country in West Africa bordered by Ghana, Burkina Faso, and Benin. Although Togo's poverty rate fell from 61.7 percent in 2006 to 53.5 percent in 2017, poverty and inequality remain extremely high, especially in rural areas where 69 percent of households were living below the poverty line in 2015.<sup>1</sup> The country is divided into five administrative regions<sup>2</sup> and runs a unitary presidential republic system with a parliament.

In 2019, Togo's overall GDP (PPP) fell just below \$13 billion, with a GDP (PPP) per capita of \$1,597.<sup>3,4</sup> With an area of 56,785 km<sup>2</sup>, Togo has a population of 8,082,366 (2019) and a population density of 145.05 people per km<sup>2</sup> (2018).<sup>5</sup> Though urbanization has increased in recent decades, majority of Togo's population still resides in rural areas—57.8 percent in 2019.<sup>6</sup> Though its coastline measures 51 km, just under 2 million Togoese reside in coastal areas as of 2014,<sup>7</sup> most notably in the capital city, Lomé.

<sup>1</sup> World Bank Group, "Togo—Overview," 2021, <https://www.worldbank.org/en/country/togo/overview#1>.

<sup>2</sup> Statoids, "Regions of Togo," 2015, <http://www.statoids.com/utg.html>.

<sup>3</sup> GDP, PPP (constant 2017 international dollars) and GDP per capita, PPP (constant 2017 international dollars).

<sup>4</sup> World Bank Group, "World Development Indicators," 2020.

<sup>5</sup> Ibid.

<sup>6</sup> Ibid.

<sup>7</sup> Jambeck et al., "Plastic Waste Inputs from Land into the Ocean."

## Plastic Industry and Ecosystem

In 2018 and 2019, Togo had no domestic resin production. Its conversion industry processed 54 kt of resin (37 kt PE, 17 kt PP) in 2018 and 43 kt of resin (41 kt PE, 2 kt PP) in 2019. Togo is a net importer of plastics. In 2019, 95 million kg of plastics were imported into the country, with PE and PP accounting for about 95 percent of the imports.<sup>8</sup> Only 896,069 kg of plastics were exported from Togo that same year, 95 percent of which consisted of scrap plastics and PE.<sup>9</sup>

## Solid Waste Management

Togo generates 0.52 kg of MSW per capita per day and this amounts to an overall daily MSW generation of 1 million kg.<sup>10</sup> It should be noted, however, that about 83.5 percent of MSW generated in Togo is inadequately managed.<sup>11</sup>

Plastic waste accounts for just below 11 percent of MSW arisings, with a daily generation rate of about 113,000 kg, of which 83.5 percent is inadequately managed;<sup>12</sup> 2,268 kg/day of plastic waste leaks into the environment in Togo.<sup>13</sup>

## Legislation, Policies, and Other Initiatives

The government ministry responsible for municipal waste management in Togo is the Ministry of Environment.<sup>14</sup> Waste management in Togo is driven by the following law:

- Framework Law on the Environment 2008-005, 2008: This law highlights the legal framework for the management of MSW in Togo, as well as industrial and hazardous waste.<sup>15</sup>

In 2011, the Togolese government, through Decree No. 2011-003-PR, instituted a ban on the production, import, and marketing of non-biodegradable plastic bags, while simultaneously authorizing the sale and use of biodegradable alternatives.<sup>16</sup>

---

<sup>8</sup> UN Comtrade, "UN Comtrade Database," 2019.

<sup>9</sup> Ibid.

<sup>10</sup> Jambeck et al., "Plastic Waste Inputs from Land into the Ocean."

<sup>11</sup> Ibid.

<sup>12</sup> Ibid.

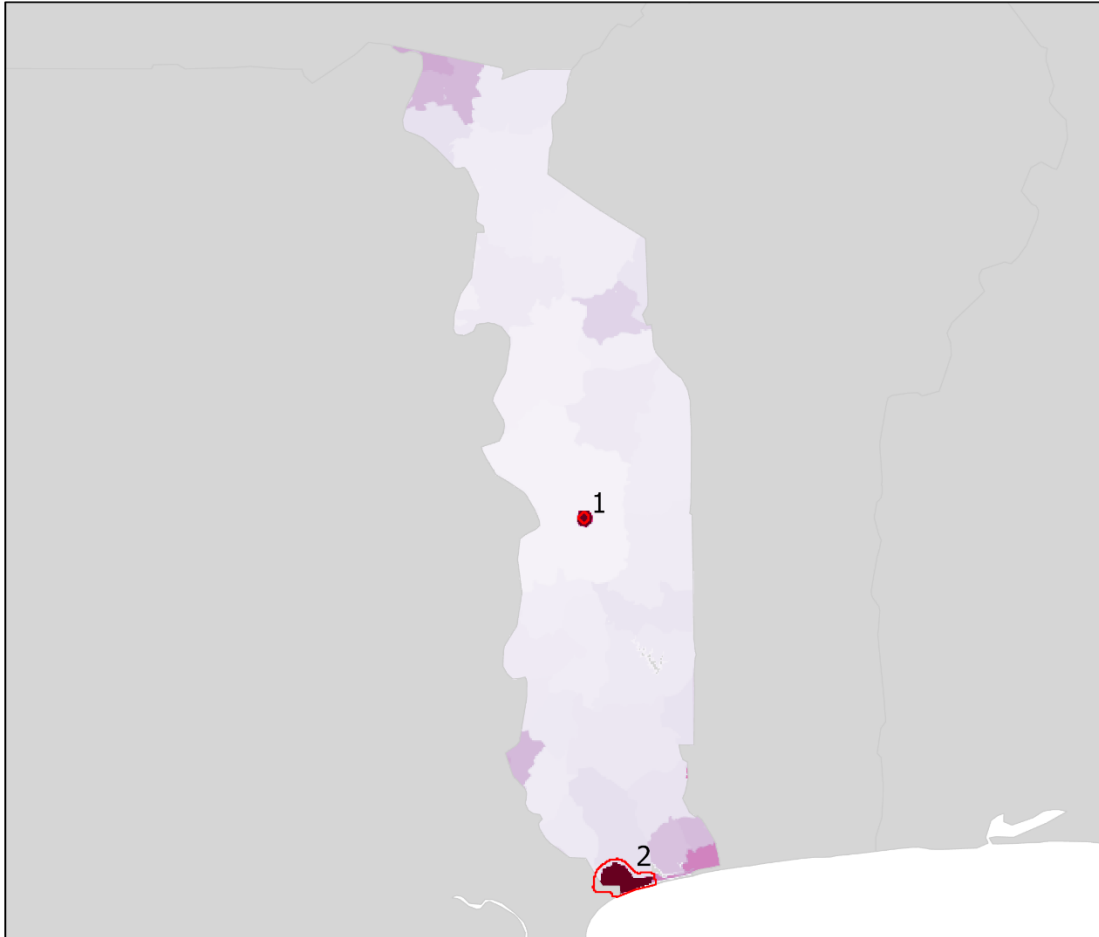
<sup>13</sup> Ibid.

<sup>14</sup> Climate & Clean Air Coalition, "Solid Waste Management City Profile: Lomé, Togo," 2017, [https://www.waste.ccacoalition.org/sites/default/files/files/lome\\_city\\_profile\\_0.pdf](https://www.waste.ccacoalition.org/sites/default/files/files/lome_city_profile_0.pdf).

<sup>15</sup> Chatham House, "Policies."

<sup>16</sup> Ibid.

# Plastic Waste in Togo



## Plastic Generation Hotspots

ID	Locale	Rank	Plastic Waste (kt)	Population	Area (km <sup>2</sup> )
1	Sotouboua	53	1.1112	68,148	32.16
2	Lome	8	42.6874	2,668,914	639.24

Total Annual National Plastic Waste Generation: 133.78 kt

Annual Plastic Waste (kg/km<sup>2</sup>)



Hotspot Extent



## Location in Region

